

2019 Labor Day Parade Line-up Map



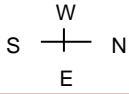
LABOR DAY PARADE

Monday, September 2, 2019

Line-up: 7:00 a.m. ~ **Start: 9:00 a.m.**

Line-up on Olive between Jefferson & 15th Street (Plus some side streets)

Route: East on Olive @ 15th to Tucker,
South on Tucker to Market, West on
Market to 15th to adjourn.



STAGING AREA *
Mayor, County Executive
Police Chief, Fire Chief *
Musicians/Parade Marshall *
United Way & Union Banner Walkers *
Clergy *
Color Guard *

UNION LINE UP ORDER

BOILERMAKERS & NEA SPECIAL DIST.

1. MACHINISTS DIST 9,837,837A&B,387
- ** WICHITA STEPPERS **
2. IRON WORKERS 396
3. IBEW 1,2,4,1439,1455, BAND
4. BRICKLAYERS/INSULATORS
5. SPRINKLER FITTERS 268
6. UFCW 655,88/GAS WRKS 11-6
7. PLUMBERS PIPEFITTERS 562
8. CARPENTERS
9. LABORERS 42, 110, 660
10. UAW 282, 2250
11. CWA 6300, RET, CNCL
12. ELEVATOR CONSTRUCTORS
13. STAGEHANDS #6
14. OPERATING ENGINEERS 148, 513
- ** MARCHING COBRAS **
15. CEMENT MASONS
16. FIREFIGHTERS 73, 2665
17. AFGE 2182
18. CBTU
19. TEAMSTERS 6,600,610,618,688,RET
20. IATSE #493/STUDIO MECHANICS
21. ROOFERS 2
22. AFSCME 410
23. SEIU 1, HEALTHCARE
24. PAINTERS GLAZIERS 58
- ** SPIRIT OF NEW NORTHSIDE BAND
25. POSTAL WRKRS/LETTER CARRIERS 343
26. TEACHERS 420
27. POLICE
28. TRANSIT WORKERS 788
29. NURSES
30. SMART

UPDATE: 07/29/19
opeiu #13
FINAL MAP

JEFFERSON

JEFFERSON

23RD

22ND

21ST

20TH

19TH

18TH

17TH

16TH

15TH

14TH

SMART

TEAMSTERS

CBTU AFGE FIREFIGHTING

MARCHING COBRAS

OPERATING ENGINEERS OPERATING ENGINEERS

CWA LABORERS

WICHITA STEPPERS MACHINISTS

NEA

BOILERMAKERS

STAGING AREA *

OLIVE

OLIVE

OLIVE

OLIVE

SMART

NURSES

TEACHERS FOP

PAINTERS SPIRIT OF NEW NORTHSIDE BAND

SEIU LETTER

IATSE 493 ROOFERS AFSCME

NO LINE UP

POLICE STATION - NO LINE UP ON 19th or 20th St.

NO LINE UP

CEMENT

ELEVATOR CONSTRUCTORS STAGEHANDS

CARPENTERS UAW

PLUMBERS PIPEFITTERS

UFCW - GASWORKERS

SPRINKLER

BRICKLAYERS/INSULATORS

IBEW

IRON WORKERS

23rd

22nd

21st

20th

19th

18th

17th

16th

15th

LOCUST

LOCUST

LOCUST

LOCUST

PER ST LOUIS POLICE DEPARTMENT LEFT TURN LANE MUST BE KEPT OPEN

TUCKER